

This right of way map when recorded is an instrument of conveyance, transferring in accordance with the Florida Statutes 337.29 all right, title, and interest of the Florida Department of Transportation in the road, street, highway, set forth on this map to the City of Stuart.

Recorded in Public Records of Martin County, Florida, this \_\_\_\_\_ day of \_\_\_\_\_, A.D. 2012, in Road Plat Book \_\_\_\_\_, Page \_\_\_\_\_.

Clerk of the Circuit Court  
Martin County, Florida

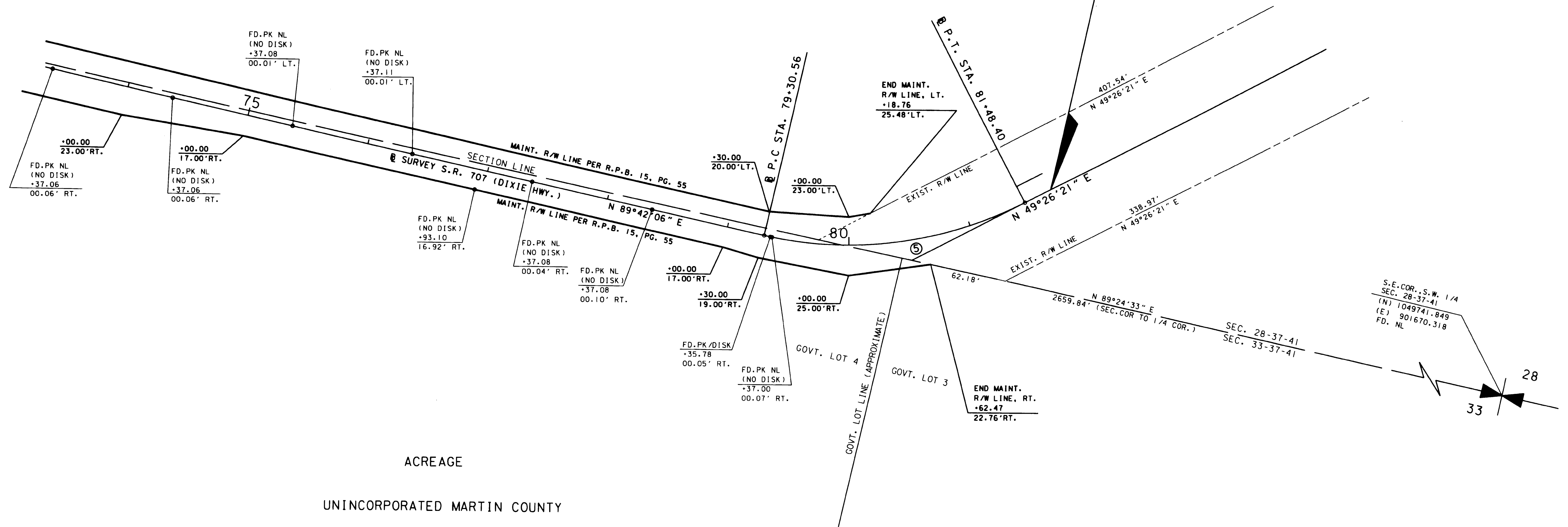
The limits of this roadway transfer for Section 89030-Maint.(3) S.R. 707 (Dixie Highway) is from Wright Boulevard to Savannah Road.

SEC. 28, TWP. 37 S., RGE.  
SEC. 33, TWP. 37 S., RGE.  
SCALE: 1" = 40'

UNINCORPORATED MARTIN COUNTY  
ACREAGE

Ⓢ CURVE Ⓢ  
P.I. STA. 80+44.19  
(N) 1,049,721.347  
(E) 900,340.608  
Δ = 40°15'45" LT.  
D = 18°28'57"  
T = 113.64'  
L = 217.84'  
R = 310.00'  
P.C. STA. 79+30.56  
(N) 1,049,720.755  
(E) 900,226.974  
P.T. STA. 81+48.40  
(N) 1,049,795.239  
(E) 900,426.939

END PROJECT 89030-MAINT.(3)  
Ⓢ STA. 81+71.95 (BACK) -  
Ⓢ STA. 111+41.63 (AHEAD)  
BEGIN PROJECT 89030-2535  
(N) 1,049,810.553  
(E) 900,444.830



SEE SHEET 1 FOR GENERAL NOTES, CERTIFICATIONS, LEGEND, ETC.

THIS MAP IS NOT A SURVEY  
FROM WRIGHT BLVD. TO SAVANNAH ROAD

RIGHT OF WAY MAP

FLORIDA DEPARTMENT OF TRANSPORTATION  
SURVEYING AND MAPPING

APPROVED BY: *[Signature]* DATE: 08/03/12  
DISTRICT SURVEYOR

REVISION	BY	DATE	REVISION	BY	DATE

BY	DATE
PRELIM L.CEFOGLIA	05/17/02
FINAL T.BROWN	07/31/12
CHECKED P.DIAZ	08/01/12

FED. PROJ. N/A  
SECTION 89030-MAINT.(3)  
STATE ROAD NO. 707 (DIXIE HIGHWAY)  
MARTIN COUNTY

MAPS PREPARED BY: LB-696 KIMLEY-HORN AND ASSOCIATES	DATA SOURCE: SEE SHEET 1
F.P. NO. N/A	SCALE: 1" = 40'